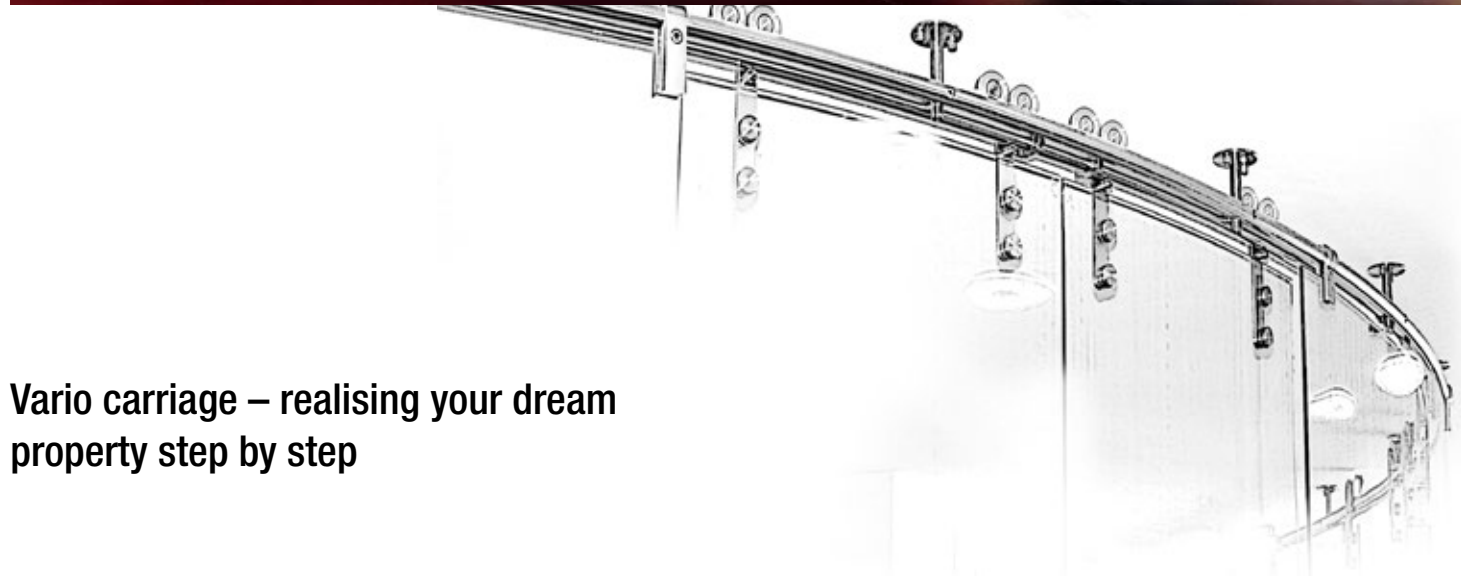


## Sliding Door System Vario

ST.1005.VA





## Vario carriage – realising your dream property step by step

Many customers consider planning of radiused systems as a big challenge. The procedure shown here illustrates how our technical department supports customers during planning and takes a large amount of work off their plate. MWE does all the planning once given the measurements. In this way you receive a plan for your radiused system with a minimum of effort.



1.

MWE designers not only develop hardware with state-of-the-art 3D CAD equipment, they also plan customer systems.



2.

Important for checking and keeping to the scale: An A0 plot of the rail contour of scale 1:1.



3.

The completed rail arc is designed precisely to the technical drawing and is compared with the drawing.



4.

The 1:1 production drawings are also supplied, meaning the installers on site have the perfect overview.





# Sliding Door System

## VARIO

ST.1005.VA

The Vario system represents the ideal solution for curved runner rails and is easily adaptable to custom specifications. Vario can also be used with curved doors.

Runner rail fixtures are available for wall, glass and ceiling installation.

Two glass point holders guarantee the highest possible stability and allow for a subsequent height adjustment up to 2 mm.

Door weight max. 135 kg

Standard finish is decorative satin stainless steel. Partly polished, completely polished or PVD coated finishing (copper, gold or black) is available on request.

Feel free to contact us, if you want to learn more about the Vario system.



**Hinweis:** Weiterentwickeltes Modell mit nochmals verbesserten Laufeigenschaften!

Items required for fastening to wall:







Vario system view

ST.1005.VA

**Note:** A highly developed model with even better running properties!



Door leaf weight up to 135 kg

Items required for fastening to wall:

Radiused rail (Ø 25 mm)



Wall fastener



Carriage



Stopper

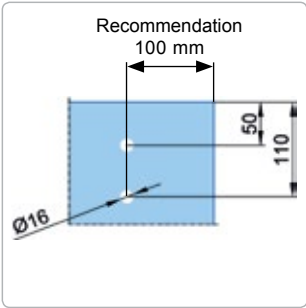


Floor guide



| Item  | Item number         |
|---|---------------------|
| Radiused rail per 100 mm  | ST.2005.VA          |
| Wall fastener (incl. rosette Ø 50 mm, screw, wall plug and spacer sleeve), other fasteners from page 72 | ST.2105.VA          |
| Vario carriage  | ST.1005.VA          |
| Vario stopper   | ST.3005.VA          |
| Floor guide for radiused glass doors (8, 10 or 12 mm glass)   | ST.4008.R/4010/4012 |
| Bottom floor guide  | ST.4005.17          |
| Klassik system door handle pair, handle length 600 mm, Ø 25 mm, not including attachments (page 55)     | TG.1101.25          |
| MWE plans and constructs the entire system!   |                     |

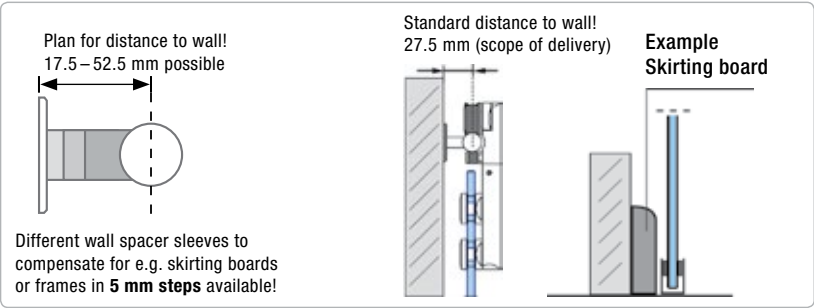
Carriage glass bores:



Wall fastener:

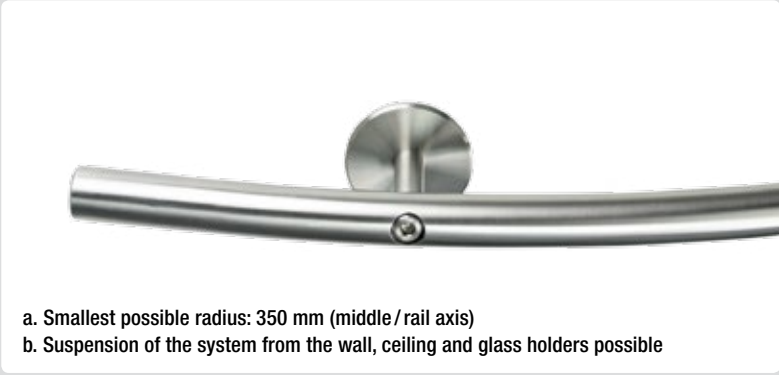
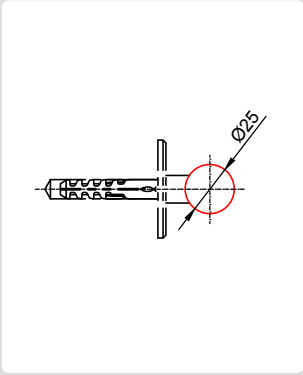


Wall distance:



ST.2105.VA

Radiused rail for Vario sliding door system

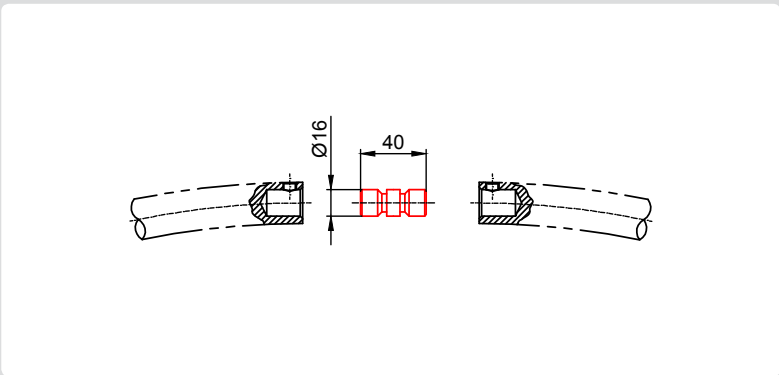


- a. Smallest possible radius: 350 mm (middle / rail axis)
- b. Suspension of the system from the wall, ceiling and glass holders possible

Ø rail: 25 mm,  
Ø wall rosette: 50 mm

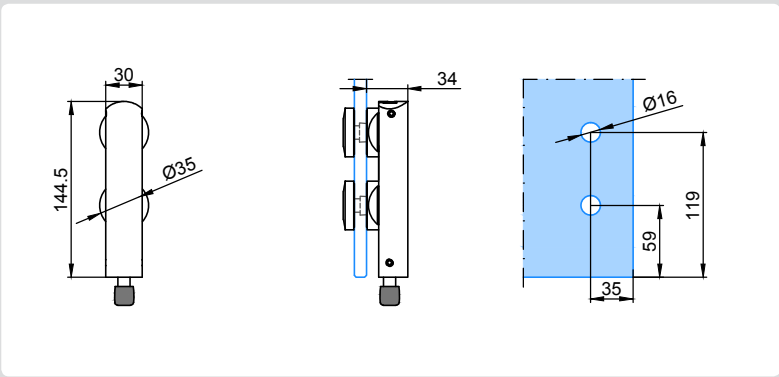
ST.2025.VA

Seamless rail connector for multiple-part, radiused rails



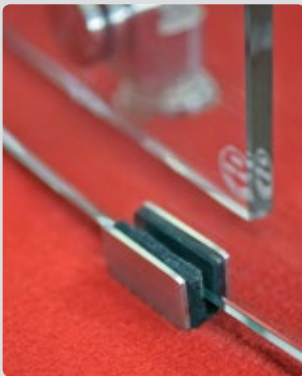
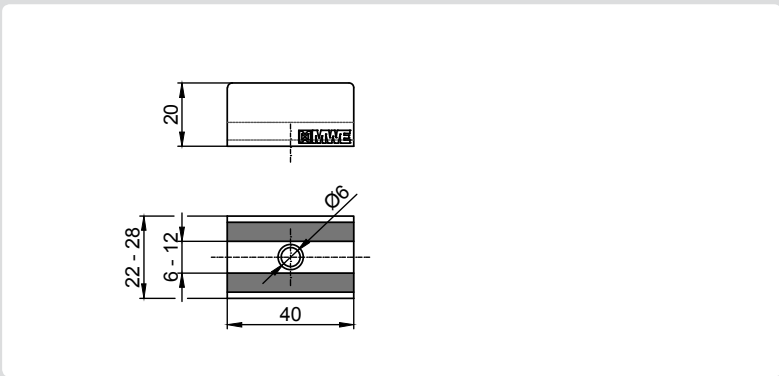
ST.4005.17

Bottom floor guide for Vario system, glass

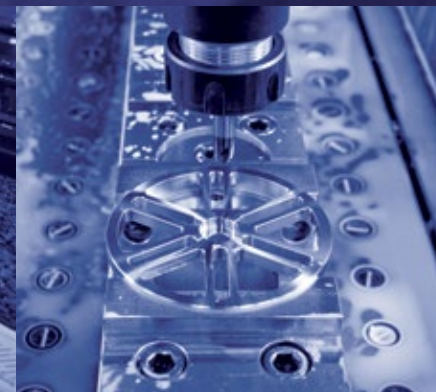


ST.4006.40 - ST.4012.40

Floor guide for radiused glass door leafs (large radii)







# MANUFACTORY



MWE stands for high quality and great attention to detail. Our philosophy and mission is to provide products that keep up with the spirit of the time.

We keep meeting the highest requirements in terms of design, quality and functionality. Top MWE technology combined with excellent customer relationship management results in "Quality built on passion"!

Click here to browse through our catalogues and magazines:



Doors



Ladders



Showers



Door pulls

